

The secret of longevity

COBIOSTEM ALERCE

COBIOSA
NATURALLY EFFECTIVE

COBIOSTEM ALERCE is a **stem cell extract from the Alerce**, one of the **longest-living ancient trees** in the plant kingdom. Thanks to cell culture technology, it is possible to access the properties of this unique species without compromising its biodiversity.



This active ingredient holds the secret to longevity, thanks to its polyphenolic composition and the presence of extracellular vesicles aligned with the **“exosome-inspired”** trend.

It accelerates **skin regeneration**, **reduces wrinkles**, helps **preserve the ECM**, and provides **blue light protection**.



INCI

Fitzroya cupressoides callus extract, Glycerin, Pentylene Glycol

DOSE OF USE

1-2%

SOLUBILITY

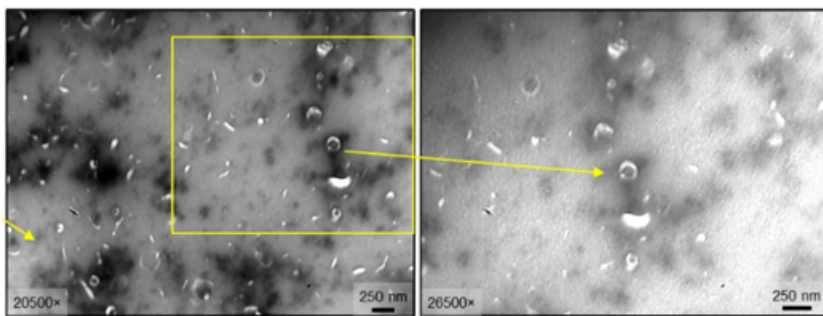
Hydrosoluble

EFFICACY TESTS

CHARACTERIZATION

NANOTRACKING ANALYSIS HISTOGRAM (NTA)
TRANSMISSION ELECTRONIC MICROSCOPY (TEM)

EXTRACELLULAR VESICLES



EVs concentration (particles/mL) = 1.5 x 10¹¹

COBIOSTEM ALERCE is an “exosome-inspired” active ingredient with the presence of extracellular vesicles (EVs).

IN VITRO

0,125% Alerce Extract Keratinocytes (ATCC) 24 & 48 hours

SKIN REGENERATION

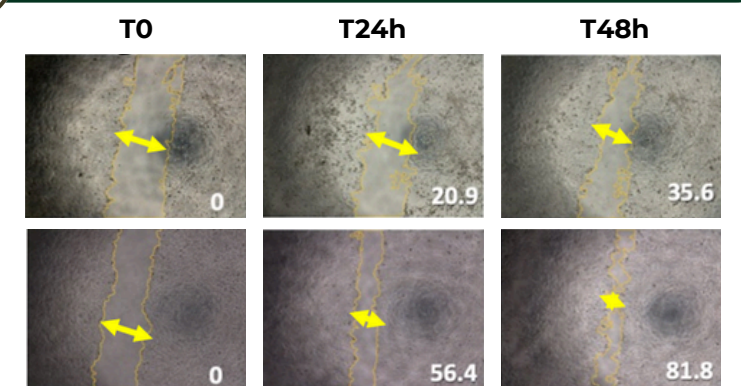
SCRATCH TEST: Culture scratch assay and evaluation of the percentage of repair of the scratched area.

Alerce extract accelerates the **regeneration and wound-healing process by 56.4% after 24h and by 81.8% after 48h.**

*** 1% COBIOSTEM ALERCE: +61,4 a 48h (x2 times vs. control H2O)

H2O (Control)

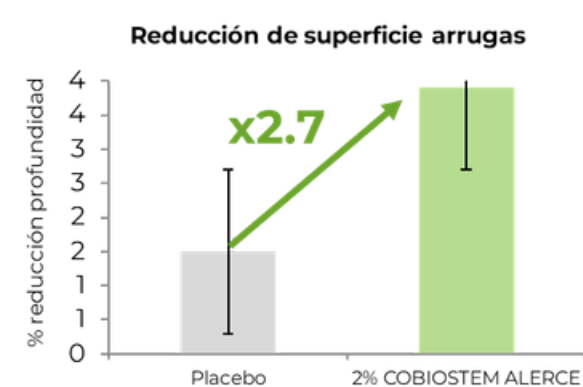
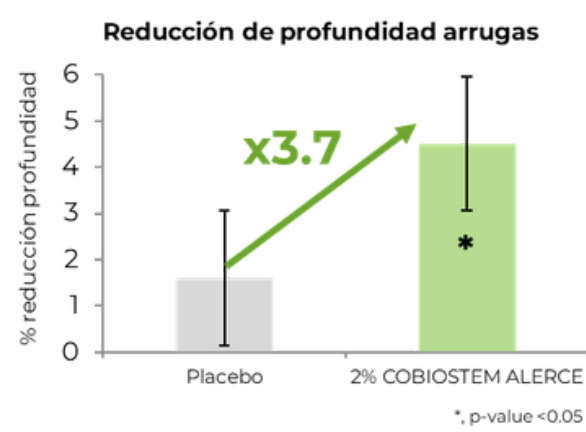
0,125% Alerce extract



IN VIVO

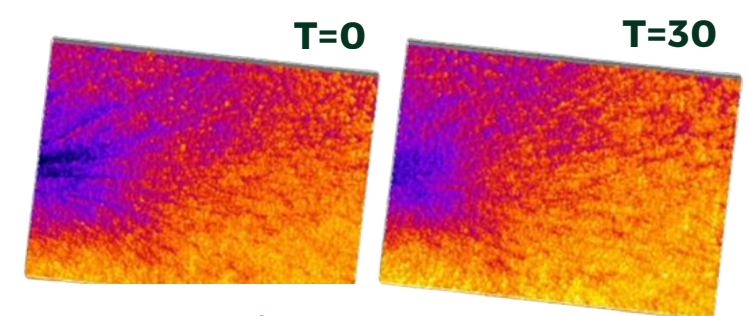
2% Cobiostem Alerce 22 volunteers 30 days

ANTI-WRINKLE EFFECT



COBIOSTEM ALERCE shows a **significant wrinkle-reducing effect after 30 days of use.**

95% of volunteers experienced a **visible wrinkle reduction**



N°9 volunteer results

Marketing claims

 STEM CELL EXTRACT FROM A MILLENARY TREE	 SKIN LONGEVITY & RESILIENCE	 BLUE LIGHT PROTECTION	 PROMOTES SKIN REGENERATION	 ANTI-WRINKLE EFFECT	 “EXOSOME-INSPIRED” INGREDIENT
--	--	----------------------------------	---------------------------------------	--------------------------------	--